

A COMPLETE LIVING EXPERIENCE.

Luxury
APARTMENTS
AT SS INFINITUS





REDEFINING QUALITY LIVING

Presenting 1-2-3 BHK **MID RISE LUXURY APARTMENTS** that are a perfect combination of vibrant & green surroundings, unique design and high quality construction standards for quality living.

Feel the tranquility in the midst of stunning scenic greens, majestic view with wide open spaces.



**SEE GREEN
LIVE GREEN**

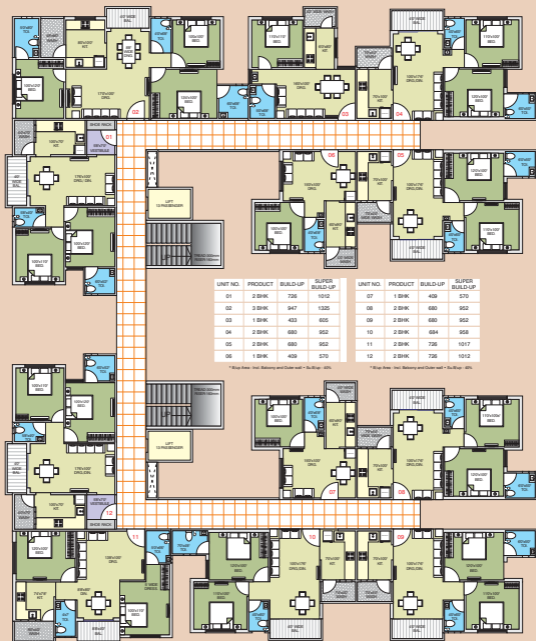


**ICONIC
DESIGN**

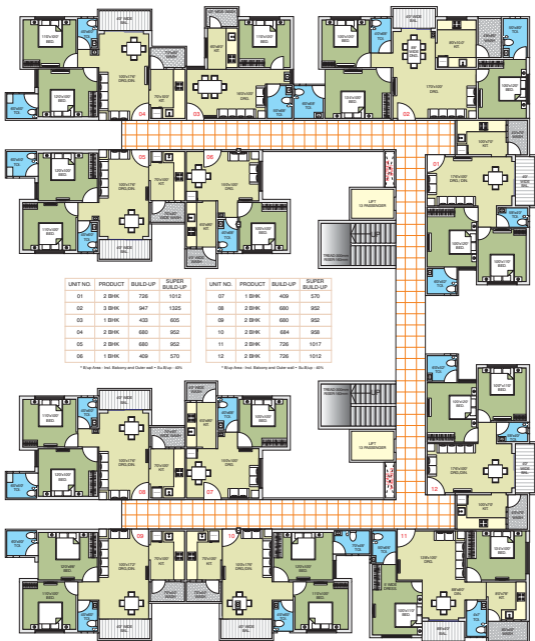


**A GREAT
INVESTMENT**

THE PLAN



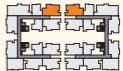
TOWER A AREA (SQ. FT.)



TOWER A AREA (SQ. FT.)



2 BHK FLAT ◀



2 BHK FLAT ◀





3 BHK FLAT ◀



1 BHK FLAT ◀



28 GARDENS

101 AMENITIES

88 ACRES SECURED CAMPUS

QUALITY CONSTRUCTION

UPBEAT NEIGHBORHOOD

100 FEET WIDE ROADS

PRIME LOCATION

QUALITY THAT SPEAKS FOR ITSELF

Mid-Rise Luxury Apartments by SS Infinitus are built with great attention to detail, design and quality. The best of materials with the best of designs promise homes that are fully functional in the true sense of the word. The flooring, the finishing, the fittings and fixtures leave no room for compromise.



100 FEET WIDE ROAD

PROPOSED RING ROAD

1

2

5

S

AURA STREET

3

7

6

4

S

MIDAS STREET

S

ORION STREET

MR-11



STRATEGICALLY LOCATED ON MR-11, RING ROAD, INDORE

The location of SS Infinitus at MR-11 allows you the ease to travel to any part of the city and yet take refuge in its peace and tranquillity. The prominent educational institutes, malls and hospitals of the city are easily accessible from the township.

CENTRAL INDIA'S FIRST TOWNSHIP WITH 101 AMENITIES



- PLOTS • TWO WAY HOMES • HOTEL
 - ROW HOUSE BUNGALOWS
- SUPER LUXURY INDEPENDENT FLOORS
 - LOW-RISE LUXURY APARTMENTS
 - MID-RISE LUXURY APARTMENTS
- CLUB HOUSE • COMMERCIAL BUILDING
 - SHOPPING MALL • SUPER MARKET

SS Infinitus

Live the 101 life

DEVELOPERS



PROMOTERS



Site Address: MR - 11, Ring Road, Indore (MP)
452 010 INDIA

Head Office: 205 - 207, Rafael Tower,
8/2, Old Palasia, Indore (MP) - 452 001 INDIA



**Enquiries & Bookings Call: 97558 09999 or
email: enquiry@ssglobalgroup.com**

www.ssinfinitus.com



@SSInfinitus



@ss_infinitus

The Developers / Promoters reserve the right to make any changes in the plan and specifications mentioned in the brochure. This is a conceptual presentation and not a legal offering. • Builder Registration Number - 660/Colony Cell/ 2014 dated 13/05/2014
Renewal Number - 338/ Colony Cell/2019, dated 29/04/2019 • Colony Cell Permission Number - 3876/ Colony Cell/ 2019, dated 29/12/2018 • Diversion Order Number - 77/A-2/2012, dated 01/12/2011 • Colony Development Permission - 38/2011, dated 12.12.2011 • TNCP - 1824, dated 17.03.2011 • TNCP Revised Number - 11707, dated 31/12/2014 • Sanction MAP Number - 4174/ IMC/ Z08/ W35/ 2019, dated 03/09/2019 • Project SS INFINITUS - PHASE 9 is approved by RERA Number P-IND-19-2484